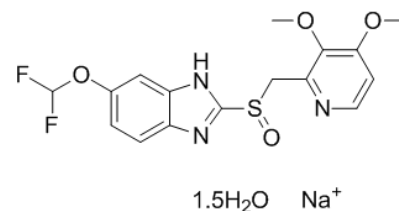


Product Name : Pantoprazole sodium hydrate
Cat. No. : PC-45311
CAS No. : 164579-32-2
Molecular Formula : $C_{16}H_{15}F_2N_3O_4S \cdot 3/2H_2O \cdot Na$
Molecular Weight : 433.38
Target : Proton Pump
Solubility : 10 mM in H₂O



Biological Activity

A proton pump inhibitor that inhibits gastric acid secretion; works on gastric parietal cells to irreversibly inhibit (H⁺/K⁺)-ATPase function and suppress the production of gastric acid; inhibits autophagy and increases the toxicity of docetaxel in vitro and in vivo.

Ulcer

Approved

References

Tan Q, et al. Br J Cancer. 2015 Mar 3;112(5):832-40.

Feng S, et al. Oncol Rep. 2016 Dec;36(6):3207-3214.

Zeng X, et al. Oncotarget. 2016 Apr 19;7(16):22460-73.

Caution: Product has not been fully validated for medical applications. Lab Use Only!

E-mail: tech@probechem.com